

Blue Coat PolicyCenter S200

Efficiency and Simplification with Centralized Management for PacketShaper

Your network is growing and your business demands a highly efficient and high performance network environment. Effectively managing bandwidth efficiency and application performance does not have to get more complicated as the size and complexity of your network grow. Blue Coat PolicyCenter makes it easy to manage multiple Blue Coat PacketShaper appliances in a large and distributed network in order to maintain optimum network and application performance. Whether you have a few PacketShaper appliances located at one site or thousands distributed around the world, PolicyCenter brings comprehensive performance and bandwidth control to your fingertips in a centrally located command center.

Optimization Made Simple

PolicyCenter makes it easy to maintain optimal performance by providing a comprehensive, integrated view of all PacketShaper appliances, network traffic, links and partitions. An intuitive, color-coded summary empowers you to proactively identify potential problems at a glance, and maximizes the powerful network traffic classification and control features within PacketShaper to take appropriate corrective actions quickly.

Plug-and-Play Deployments

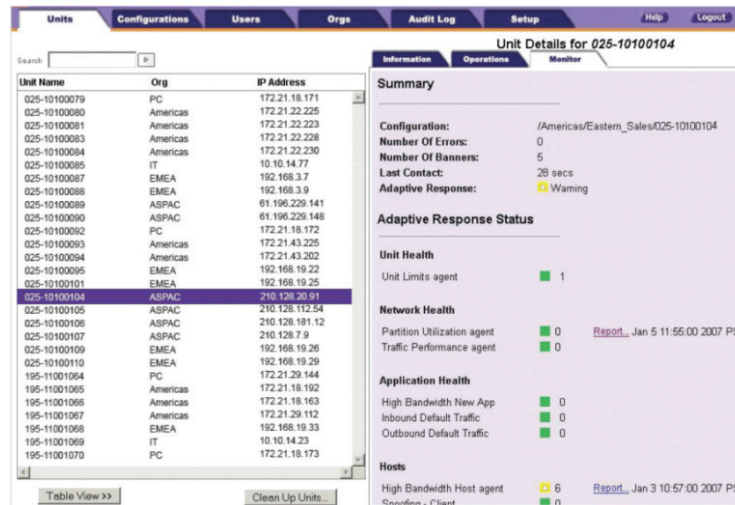
PolicyCenter greatly simplifies remote, multi-unit deployments by automatically completing the settings and configuration process. Simply connect additional PacketShaper appliances to your network and assign them the appropriate appliance name, IP address, subnet mask, gateway and policy. Configuration is just that easy.

AT A GLANCE

Easy, Powerful and Secure

PolicyCenter has an intuitive, centralized interface that is organized to match the way you work making it easy to:

- Auto-deploy and configure appliances at remote locations in minutes
- Control performance with easy-to-apply partitions and policies
- Distribute traffic classes and software upgrades globally
- Monitor and quickly respond to network, application and unit performance changes
- Secure access to devices, and log configuration changes and activities using AAA features



Enterprise-Level Flexibility and Scalability

Powerful features, supporting LDAP, allow you to define logins, roles and create a hierarchy to match your organization and its security policies. Audit trails tell you what changes have been made, when and by whom. No matter how distributed your network, you can manage large communities of PacketShapers from a single location. Multiple tier configurations further increase scalability. The user interface, being based on sophisticated rendering technology, provides high-performance management for small and large PacketShaper communities alike.

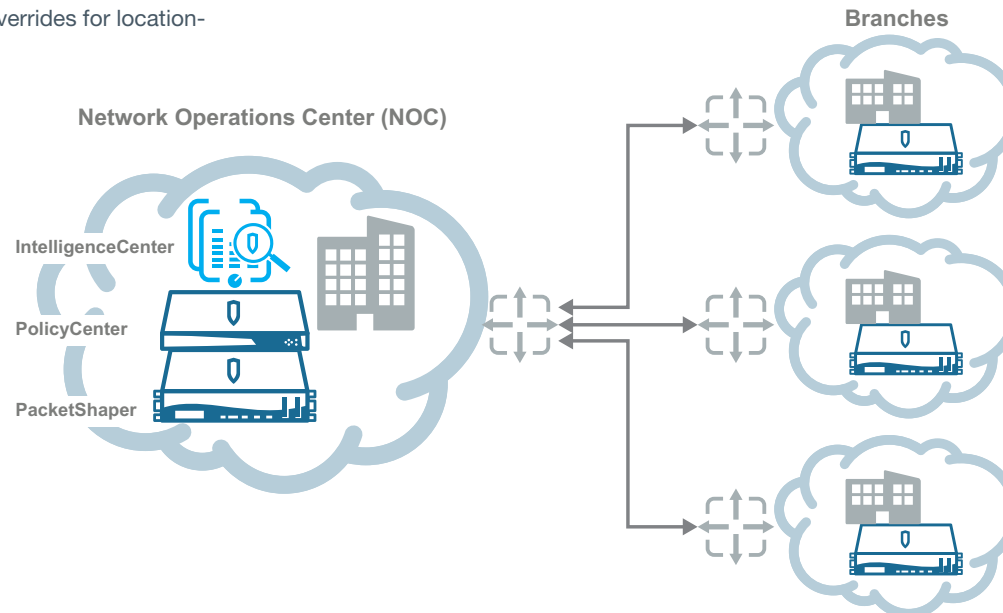
Features

- Wide variety of centralized mechanisms to control performance, including dynamic partitions and sub-partitions, rate control, and never-admit, ignore and discard policies
- Flexible configuration overrides for location-specific settings

- Hierarchical configurations sharable by multiple PacketShaper appliances
- Scheduled distribution of PacketShaper software upgrades and plug-ins
- Trial and rollback modes let you push new PacketShaper configurations that just work the first time
- A centralized, single-pane view for the status of up-to 100 PacketShaper appliances
- Comprehensive, centralized network management and reporting available with Blue Coat IntelligenceCenter
- Granular administration workflow with Role Based Access Control (RBAC) based on responsibility, location, organization, and more
- AAA features provide secure, logged access

Benefits

- Manage your entire network through a single, intuitive interface
- Control up to a hundred PacketShaper appliances from a single location
- Auto-deploy and configure multiple remote appliances in minutes
- Remotely manage configurations, classes and policies on a single appliance or a group of appliances
- Apply unique policies based on location, function or other defined criteria
- Increased efficiency, reduce administrative overhead and lower total cost of ownership



Blue Coat PolicyCenter provides auto-deployment and policy management.

| POLICYCENTER | \$200 |
|----------------------|--|
| PACKETSHAPER SUPPORT | PacketShaper 1700, 3500, 7500, 12000 (Release 9.2 or later) PacketShaper S200, S400, S500 (Release 11.5.2 or Later) |
| MAX # OF SYSTEMS | 100 |
| EXPANSION SLOTS | 1 (Full Height, Not Used) |
| NETWORK I/O MODULES | Not Available |
| ONBOARD PORTS | 1x1GbE Copper Management Port |
| CONSOLE PORT | 1 RS-232 (AT-Compatible) with male DB-9 connector |

| PHYSICAL PROPERTIES | |
|--------------------------|--|
| DIMENSIONS (L X W X H) | 440mm x 433mm x 42.9mm (17.32in x 17.05in x 1.69in) (chassis only) 440mm x 487mm x 42.9mm (17.32in x 19.02in x 1.69in) (chassis with mount bracket) |
| WEIGHT (MAXIMUM, +/- 5%) | Approx. 7.4 kg (16.4 lbs) |
| POWER | AC: 100-240VAC, 50-60Hz, 6-3A |
| MAXIMUM POWER | 350 Watts |
| THERMAL RATING | Typical: 785 BTU/hr; Maximum: 1,195 BTU/hr |
| TEMPERATURE | 5°C to 40°C (41°F to 104°F) at sea level |
| HUMIDITY | 20% to 80% relative humidity, non-condensing |
| ALTITUDE | Up to 3,048m (10,000 ft.) |

| REGULATIONS | SAFETY | ELECTROMAGNETIC (EMC) |
|---------------------------|---|--|
| INTERNATIONAL | CB-IEC60950-1, Second Edition | CISPR22, Class A; CISPR24 |
| USA | NRTL-UL60950-1, Second Edition | FCC part 15, Class A |
| CANADA | SCC-CSA-22.2 No.60950-1, Second Edition | ICES-003, Class A |
| EUROPEAN UNION (CE) | CE-EN60950-1, Second Edition | EN55022, Class A; EN55024; EN61000-3-2; EN61000-3-3 |
| JAPAN | ---- | VCCI V-3, Class A |
| MEXICO | NOM-019-SCFI by NRTL Declaration | ---- |
| ARGENTINA | S Mark-IEC 60950-1 | ---- |
| TAIWAN | BSMI-CNS-14336-1 | BSMI – CNS13438, Class A |
| CHINA | CCC-GB4943.1 | CCC – GB9254; GB17625 |
| AUSTRALIA/NEW ZEALAND | AS/NZS 60950-1, Second Edition | AS/ZNS-CISPR22 |
| KOREA | ---- | KC – RRA, Class A |
| RUSSIA | CU-IEC 60950-1 | GOST-R 51318.22, Class A; 51318.24; 51317.3.2; 51317.3.3 |
| ENVIRONMENTAL | RoHS-Directive 2011/65/EU, REACH-Regulation No 1907/2006 | |
| PRODUCT WARRANTY | Limited, non-transferable hardware warranty for a period of one (1) year from date of shipment. BlueTouch Support contracts available for 24/7 software support with options for hardware support. | |
| GOVERNMENT CERTIFICATIONS | For further government certification information please contact Federal_Certifications@bluecoat.com | |
| MORE INFORMATION | Contact regulatoryinfo@bluecoat.com for specific regulatory compliance certification questions and suppo | |